

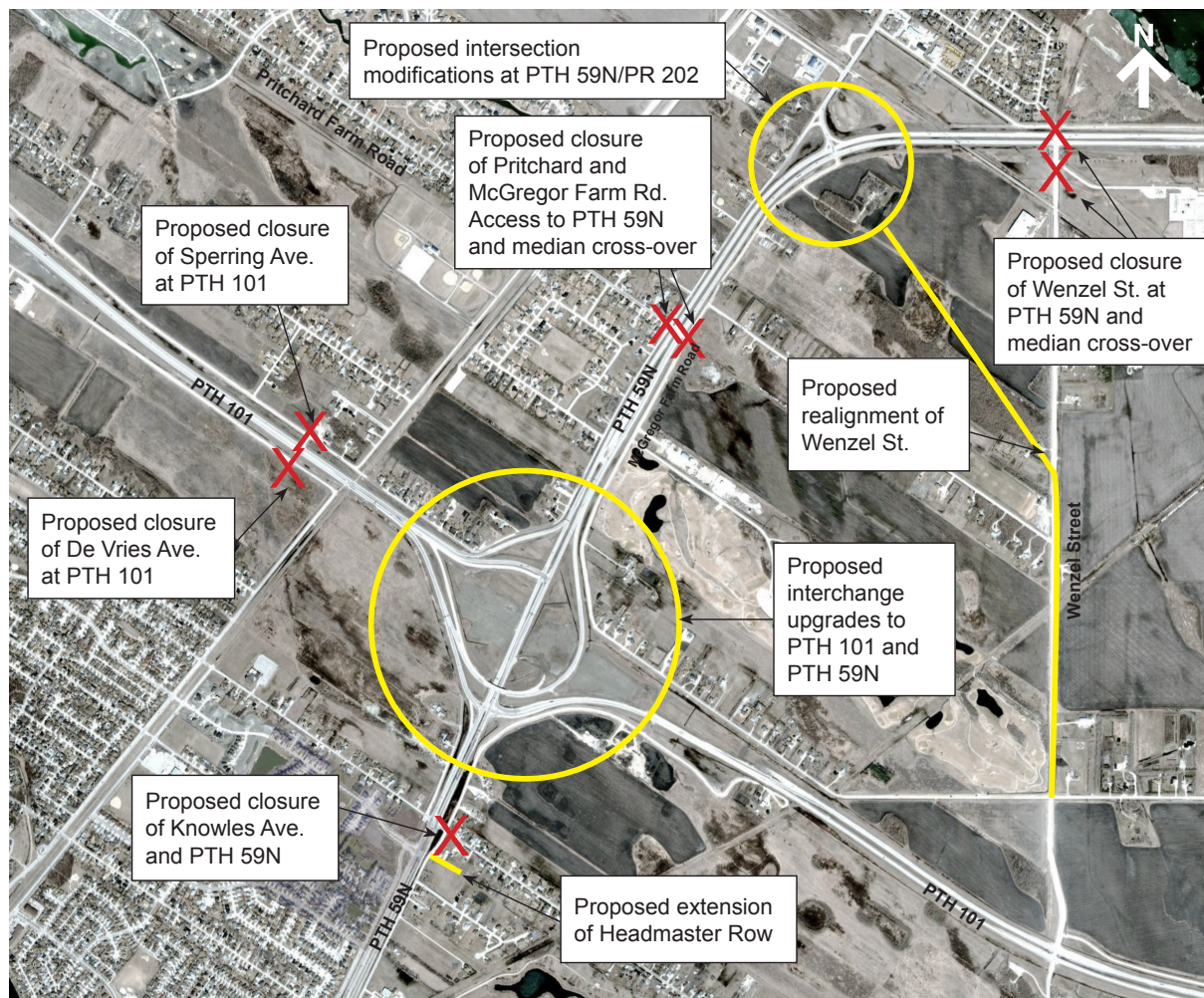
PTH 59N - PTH 101 Interchange Functional Design Study

INFORMATION SESSION - JUNE 13, 2011

Please Read Today

Dear Resident:

MMM Group (MMM), on behalf of Manitoba Infrastructure and Transportation (MIT), will be hosting an information session and workshop as part of the public consultation process for the functional design of the PTH 59N and PTH 101 Interchange. The goal of the public consultation process is to present the proposed changes to the interchange roadways at PTH 59N and PTH 101 and receive feedback on the plan.



What is a Functional Design?

Functional design is a first step of the overall process to plan and construct new roads serving the community. It includes detailed investigations and decisions regarding the number and type of traffic lanes, design of intersections, placement of traffic signals, possible alignments of utilities, location of active transportation facilities and land requirements to accommodate the future roadway/interchange. The functional design will be the basis for the design and construction of the interchange and adjacent road segments.

Background Information on the Project:

A functional design for the interchange at PTH 59N and PTH 101 was completed in the early 90's. A subsequent detailed design for the roadways was partially completed in the mid-90's. The design for structures (bridges) was performed at the conceptual level during the functional roadway design. Since that time there have been significant changes at the proposed interchange and also changes in MIT design standards. The goal of this assignment is to update the existing functional design of the interchange and complete a preliminary design of all structures for a future interchange at PTH 59N and PTH 101.

The functional design will be used to update the existing environmental license and its conditions as well as to define a land envelope for future acquisition, if needed.

This assignment will be completed by the end of 2011.

Construction is expected to start in 2013/2014.

Proposed Key Changes:

- Upgrade of interchange at PTH 59N/ PTH 101
- Closure of Pritchard and McGregor Farm Road access to PTH 59N
- Improvements to the intersection of PTH 59N/PR 202
- Realignment of Wenzel Street
- Closure of Knowles Avenue access to PTH 59N (east side)
- Extension of Headmaster Row across Lagimodiere Blvd
- Closure of De Vries/Sperring Avenue access to PTH 101

Public Involvement

MIT welcomes comments regarding the PTH 59 and PTH 101 Functional Design Project. MMM has been retained by MIT to contact the public as part of the public consultation process for the design. All comments received, with the exception of personal information, will become part of the public record.

If you would like to attend the public information session or participate in the workshop please see the information below.

Information Session Details:

Date: Monday, June 13, 2011

Time : 4:00 p.m. - 8:00 p.m.

Format: Drop-in

Location: The Legion Branch #215,
3600 De Vries Avenue, East St. Paul, MB

To obtain additional information, or to provide comments, please contact:

Misty Carson, MMM Group

Phone: 204.943.3178

Email: carsonm@mmm.ca